

wm-63-G2

DEMONTAGE DEMOUNTING



TECHNISCHE DATEN
TECHNICAL DATA



Hersteller *Manufacturer:* mawa
 Artikel-Nummer *Article Number:* **wm-63-G2**

Spannung *Voltage:* 220 – 240 V
 Netzfrequenz *Power freq.:* 50/60 Hz

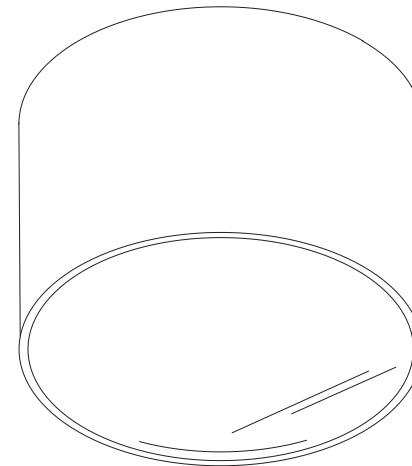
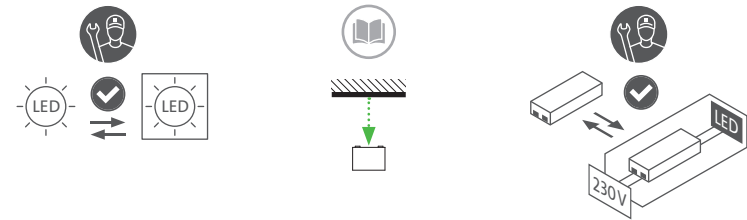
Schutzklasse *Protection class:* III
 Schutzgrad *Degree of protection:* IP54

Leuchtmittel *Light source:* 1 × Standard-LED:
 RA > 90 / 9 W / 500 mA / Vf 18 V

Dimmung *Dimming:* Dali (-4)
 Phasenan- und abschnitt dimmbar
leading edge/trailing edge phase (-7)

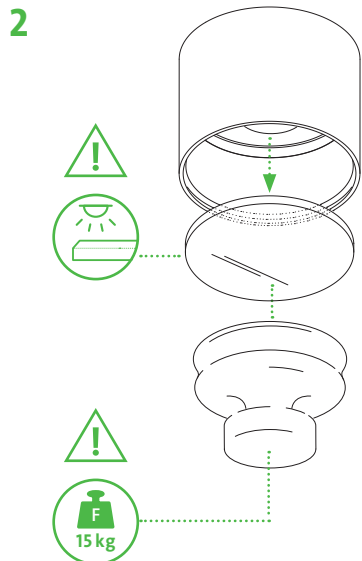
Anschlussleistung *Connected load:* Standard 11 W

AUSTAUSCHBARKEIT
REPLACE ABILITY



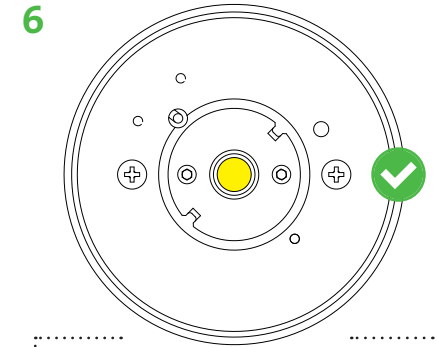
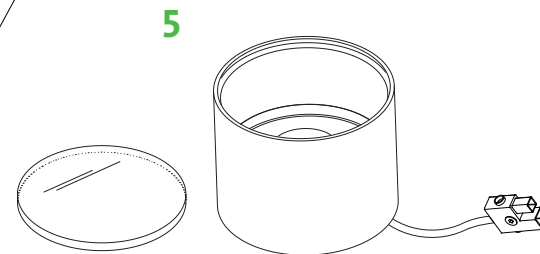
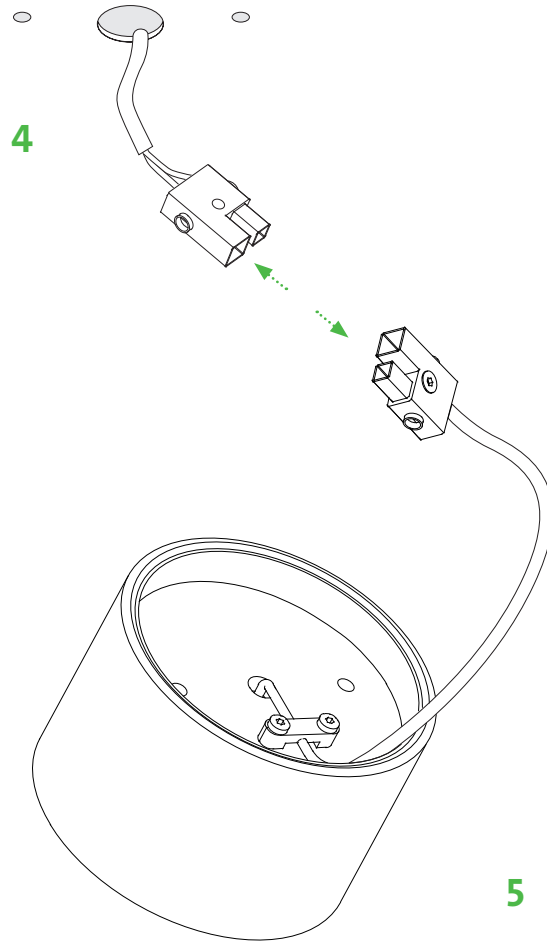
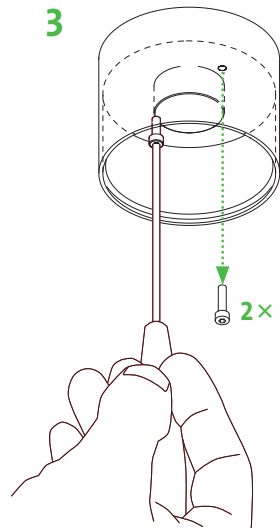
wm-63-G2

DEMONTAGE DEMOUNTING



Saugheber notwendig
Suction lifter required

Belastbarkeit 15 kg
Load capacity 15 kg



LED-Austauschanleitung
LED Replacement instructions

TD000145