

# seventies

Stromschienenstrahler

## Montageanleitung



### Technische Daten

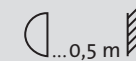
|               |                         |    |
|---------------|-------------------------|----|
| Hersteller:   | Mawa Design             | CE |
| Artikel Nr.:  | se-11-(1-5)             |    |
| Netzspannung: | 230 V / 50 Hz           |    |
| Schutzklasse: | I                       |    |
| Schutzgrad:   | IP20                    |    |
| LED:          | LED Citizen             |    |
|               | 700 mA, 3000 K, CRI >90 |    |
| Leistung:     | 26 W                    |    |
| Lichtstrom:   | 2400 lm                 |    |

### Mögliche Konverter

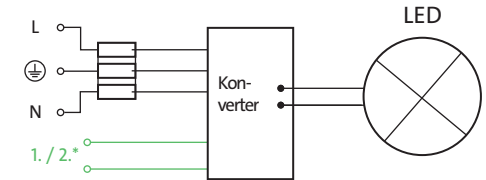
|                                |                           |
|--------------------------------|---------------------------|
| 1. Roal / Strato 700 mA:       | 1 - 10 V                  |
| Spannung / AC:                 | 120 / 230 / 240 / 277 V ~ |
| Dimmung:                       | 10 - 100 %                |
| Strahlermaße:                  | ø 90 mm / L: 150 mm       |
| 2. TCI JOLLY DALI BI / 700 mA: | DALI                      |
| Spannung / AC:                 | 220 - 240 V ~             |
| Dimmung:                       | 0,5 - 100 %               |
| Strahlermaße:                  | ø 90 mm / L: 180 mm       |

|                                  |                     |
|----------------------------------|---------------------|
| 3. EP-tronics LD25W-TE / 700 mA: | abschnittsdimmbar   |
| Spannung / AC:                   | 120 / 230 V ~       |
| Dimmung:                         | 20 - 100 %          |
| Strahlermaße:                    | ø 90 mm / L: 180 mm |

Baureihe 70's  
geprüft durch

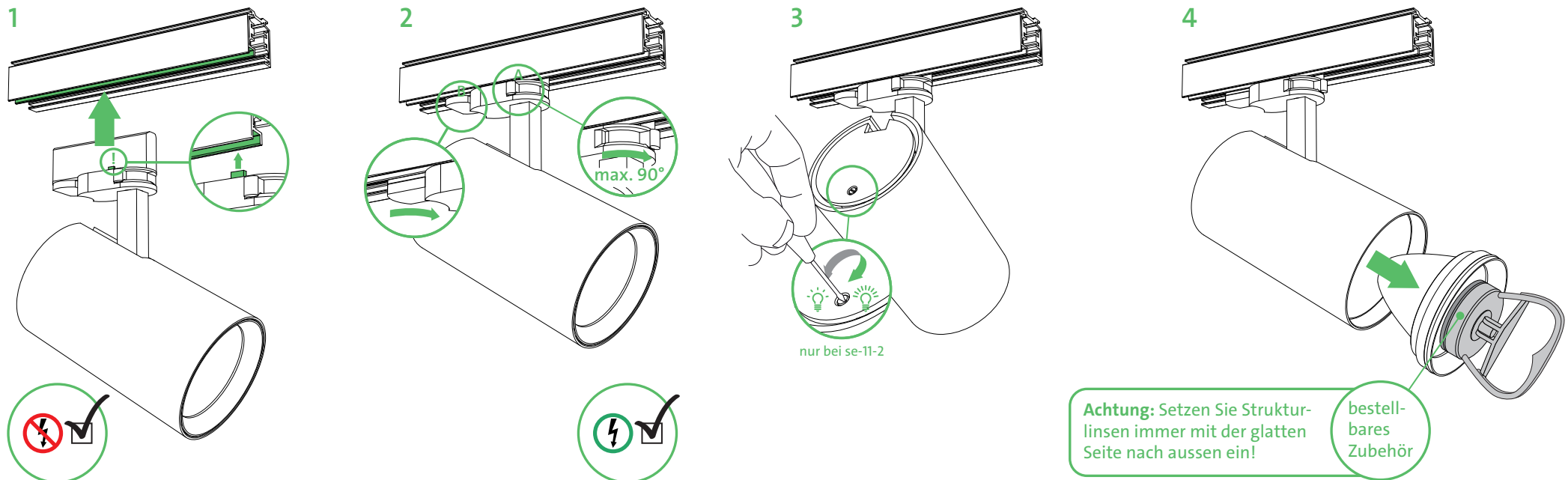


### Schaltplan



\* 1. bei 1-10V: + / -  
2. bei DALI: DALI1 / DALI2

>> Montage nur durch autorisierten Elektroinstallateur!



■ Es freut uns, dass Sie sich für eine mawa-Leuchte entschieden haben.

mawa design GmbH | Stand 16/01/2016 | Irrtümer und technische Änderungen vorbehalten | www.mawa-design.de

# seventies


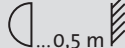
busbar spotlight

## Assembly instructions

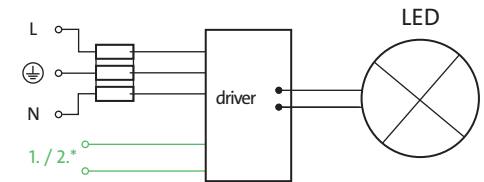
| Technical Data        |                         | CE |
|-----------------------|-------------------------|----|
| Manufacturer:         | Mawa Design             |    |
| Article no.:          | se-11-(1-5)             |    |
| Line voltage:         | 230 V / 50 Hz           |    |
| Protection class:     | I                       |    |
| Degree of protection: | IP20                    |    |
| LED:                  | LED Citizen             |    |
|                       | 700 mA, 3000 K, CRI >90 |    |
| Power:                | 26 W                    |    |
| Luminous flux:        | 2400 lm                 |    |

| Possible Drivers               |                           |
|--------------------------------|---------------------------|
| 1. Roal / Strato 700 mA:       | 1 - 10 V                  |
| Voltage / AC:                  | 120 / 230 / 240 / 277 V ~ |
| Dimming:                       | 10 - 100 %                |
| Spotlight dimensions:          | ø 90 mm / L: 150 mm       |
| 2. TCI JOLLY DALI BI / 700 mA: | DALI                      |
| Voltage / AC:                  | 220 - 240 V ~             |
| Dimming:                       | 0,5 - 100 %               |
| Spotlight dimensions:          | ø 90 mm / L: 180 mm       |

|                                  |                     |
|----------------------------------|---------------------|
| 3. EP-tronics LD25W-TE / 700 mA: | trailing edge       |
| Voltage / AC:                    | 120 / 230 V ~       |
| Dimming:                         | 20 - 100 %          |
| Spotlight dimensions:            | ø 90 mm / L: 180 mm |

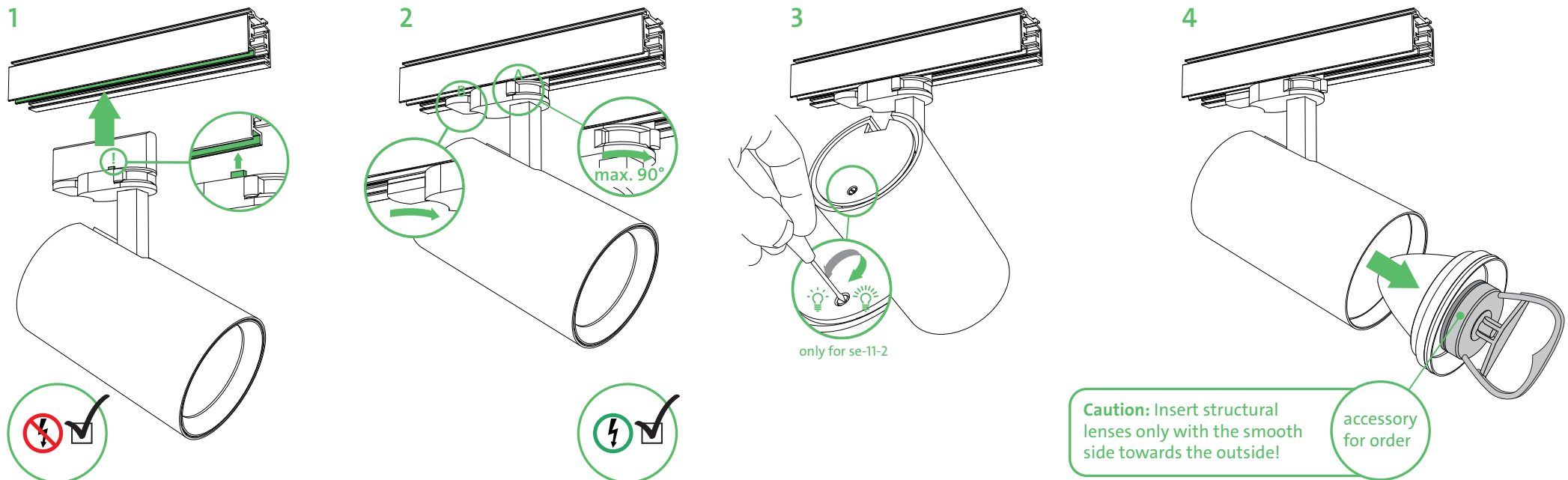
Production series 70's tested by **DEKRA**   ...0,5 m

### wiring diagram



\* 1. for 1-10V: + / -  
2. for DALI: DALI1 / DALI2

>> The lamp must be assembled and mounted only by an authorised electrician!



■ We are pleased that you have decided in a favour of mawa-light.

mawa design GmbH | stand 16/01/2016 | errors and technical changes reserved | [www.mawa-design.de](http://www.mawa-design.de)